



# Subtech 41 Shoalbuster 2509 tug boat | Data sheet

## General

<b>Type of vessel</b>	Tug Boat
<b>Basic functions</b>	Towing, Mooring, Pushing, Anchor Handling, Dredge Support
<b>Builder</b>	DAMEN Shipyards Hardinxveld
<b>Place</b>	Netherlands
<b>Build date</b>	2018
<b>Delivery date</b>	2018
<b>Classification</b>	Bureau Veritas Hull MACH Tug Unrestricted Nav, AUT-UMS
<b>Hull material</b>	Steel

## Boat registry

<b>Ship's name</b>	Subtech 41
<b>BV registration number</b>	22722A
<b>Official number</b>	9696486
<b>Flag</b>	Saudi Arabia
<b>Yard</b>	571675

## Dimensions and weight

<b>Gross Tonnage 69</b>	177 tons
<b>Net Tonnage 69</b>	141 tons
<b>Overall length</b>	24.99 m
<b>LPP</b>	22.54 m
<b>Breadth</b>	9 m
<b>Depth</b>	3.4 m
<b>Draught</b>	2.6 m
<b>Displacement</b>	256 tons
<b>Freeboard</b>	515 mm

## Tank capacity

<b>Fuel oil</b>	62.2 m <sup>3</sup>
<b>Fresh water</b>	22.4 m <sup>3</sup>
<b>Lubrication oil</b>	1.9 m <sup>3</sup>
<b>Dirty oil</b>	3.1 m <sup>3</sup>
<b>Hydraulic oil</b>	0.9 m <sup>3</sup>
<b>Bilge water</b>	0.9 m <sup>3</sup>
<b>Sewage</b>	4.7 m <sup>3</sup>
<b>Gear oil</b>	0.4 m <sup>3</sup>

## Performance

<b>Bollard pull ahead</b>	30 tons (m)
<b>Speed</b>	11.5 knots

## Propulsion system

<b>Main engines</b>	2x Caterpillar C32-TTA ACERT
<b>Total power</b>	1790 kW (2434 bhp) at 1800 rpm
<b>Gearboxes</b>	2x Twindisc MGX5321 6.39:1
<b>Propulsion</b>	2x Promarin Fixed Pitch Propeller
<b>Nozzles</b>	2x 1800 mm Van de Giessen "Optima"
<b>Bow thruster</b>	175 bhp, Hydraulic Driven

## Deck layout

<b>Anchors</b>	1x 225 kg & 1x 270 kg Pool (HPP)
<b>Chain</b>	19 mm Shortlink Anchor Chain 137.5 m
<b>Anchor winch</b>	Kraaijeveld Hydraulically Driven
<b>Deck crane</b>	Heila AKC 120-4SL 4300kg at 18.03 m
<b>Anchor handling</b>	40 tons at 6 m/min (Towing Winch)
<b>Acc. to reg. of</b>	9 tons at 18 m/min
<b>Towing pins</b>	WK 35 tons SWL 4-pin/75 tons Stopper
<b>Tugger winch</b>	Kraaijeveld 8T at 4.5 m/min

## Nautical and communication equipment

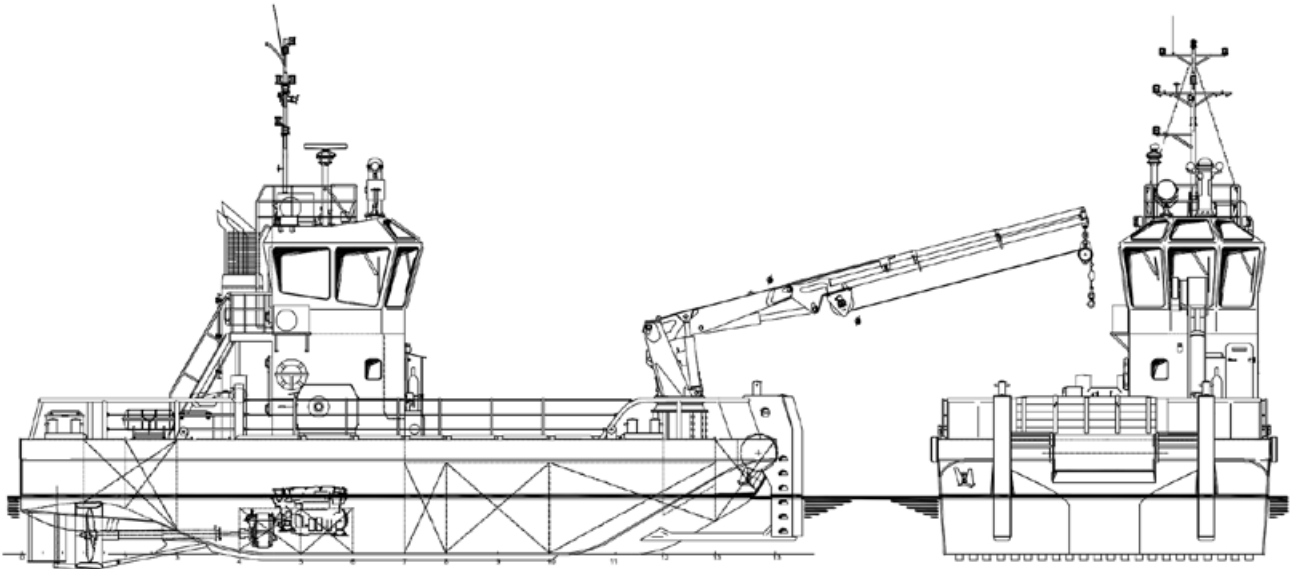
<b>Searchlight</b>	Pesch 2x 3000W
<b>Magnetic compass</b>	Kotter Type w/ Electric Repeater
<b>Gyro compass</b>	Anschuetz Standard 22 Compact
<b>Radar</b>	Furuno FAR-2117
<b>GPS</b>	Furuno GP-170
<b>Autopilot</b>	Simrad AP-70
<b>AIS</b>	Furuno FA-170
<b>Echosounder</b>	Furuno FE-800
<b>Speedlog</b>	Skipper EML-224
<b>VHF radio telephone</b>	2x Sailor RT6222, 25W, 1x Sailor 6248
<b>GSM</b>	Pepwave MAX BR-1 4G
<b>Handheld VHF</b>	2x Jotron TR60 + 2x Entel HT 644
<b>Navtex</b>	Furuno NX 700 A
<b>MF/HF transceiver</b>	Sailor 6310 w/ DSC
<b>Inmarsat-C</b>	2x Sailor 6110
<b>Bridge watch alarm</b>	Furuno BR-500
<b>Intercom</b>	Phontech CIS-300
<b>Wind indicator</b>	Meteo System Obsermet OMC-115

## Accommodation

<b>Heated and fully air-conditioned Facilities</b>	1x Captain's Cabin, 1x Officer's Cabin 4x Crew Cabin Gallery, Sanitary
--	---

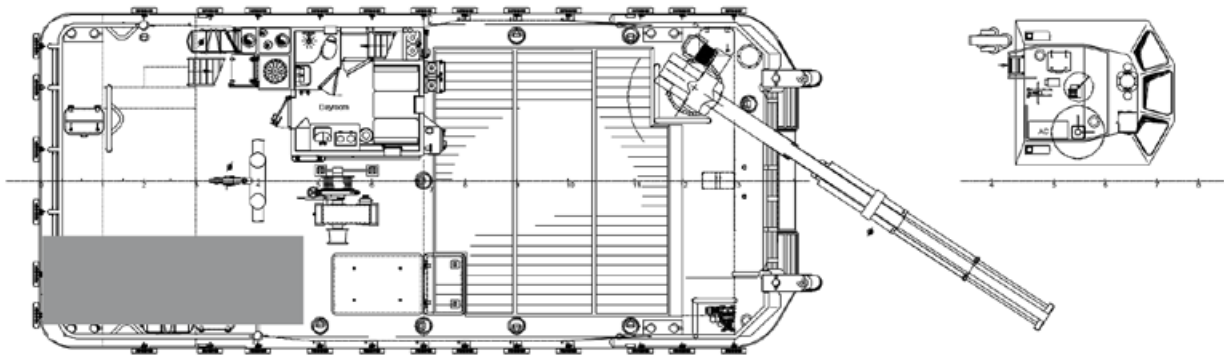
## Auxiliary equipment

<b>Generator set</b>	2x Caterpillar C4.4 NA
<b>Capacity</b>	2x 47.5 kVA, 50 Hz, 230/400V
<b>Fresh water transfer pumps</b>	SIHI 34 m <sup>3</sup> /h
<b>Fuel oil transfer pumps</b>	SIHI 34 m <sup>3</sup> /h
<b>Fuel oil separator</b>	Alfa Laval MIB 303
<b>Hydraulic set</b>	Caterpillar C-09 TA 269KW at 1800 RPM w/ Technodrive Splitter Gearbox



Maindeck

Topdeck



Below Maindeck

Bridgedeck

